

Ultimate Checklist

10 Must-Haves for Universities Wanting a Smooth Move-In





About Concept3D



Concept3D has served the education community for over a decade.

Our design services and recruitment software is trusted by over 400 Universities and Colleges across the nation.

From recruitment to commencement, Concept3D is your digital communication solution for the entire student life cycle.

"Concept3D staff are available more than most other companies I have worked with. We loved our bi-weekly meetings."

Lyssa P
Bishop's University

About This Checklist

Use this as a way to grade your move-in day communication.

Each tool listed is proven to boost ease on move-in day.

Keep in mind not every school necessarily needs every item listed. Contact us to see if what you are missing is detrimental.



Move-in Webpage

Your students will google the name of your university with “move-in day.” Have a move-in webpage ready to be your catch-all source of information for move-in day.

Email/Mail

Email/Mail is where you can be more personalized in your instructions. Send your mail reminder weeks in advance. Schedule a week before, day before, and day of email. Over-communicate!



Send a Checklist

Your students will want to know what to pack. If you fail to send a checklist to your students, they might find an alternative one online that doesn’t align with your school. Send a checklist.

Routes for Move-in

Don't leave routes up to Google Maps. Well-planned move-ins always have maps with directions personalized to each dorm. Clearly define each step of the move-in process.



FAQ Page

You have probably gotten several questions about move-in day. Write all of them down and include them on a Frequently Asked Questions page. Link this page within your move-in webpage.



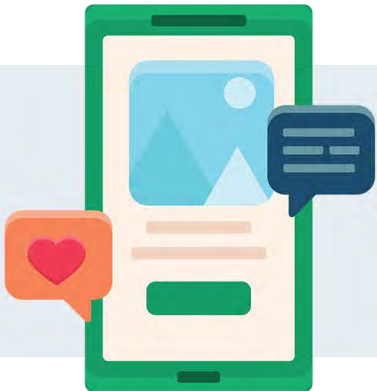
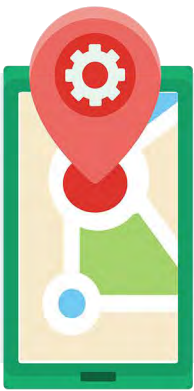


Contact Page

Post an email or phone number that students and parents can reach you. You don't want pent-up anger from lack of communication to come out on move-in day. Again, over communicate.

Interactive Map

Interactive Maps can communicate all of the above while remaining easy to understand. 88% of Freshmen respondents believe an interactive map for move-in day would be helpful.



Make it Social

Who says move-in day doesn't have to be fun? You can post funny yet informative posts about move-in that will be sure to resonate with Gen Z. Bonus - ask students to post about their move-in day!

Big Signage

Because who doesn't love big signs and spirit tunnels?! Big signage will excite students and inform them on their next steps. Have signage that labels your dorms and check-ins.



Welcome Ambassadors

Move-in day is the first real experience that students and their parents have with your university. Welcome ambassadors help answer questions and make move-in day more exciting.

Ready to make your university's move-in easier than ever?

Check out how our interactive maps create a seamless move-in day experience.



How Interactive Maps Communicate Move-in

What if there were a way to streamline communication of student movement, parking, and check-ins? What if it could be accessed on mobile?

[Read About Move-in Day Maps](#)

Interactive Maps for More than just Move-in

Our Interactive 3D Maps reach far beyond move-in day. Your students will never feel intimidated finding their way around campus again.

[Request a Demo](#)

